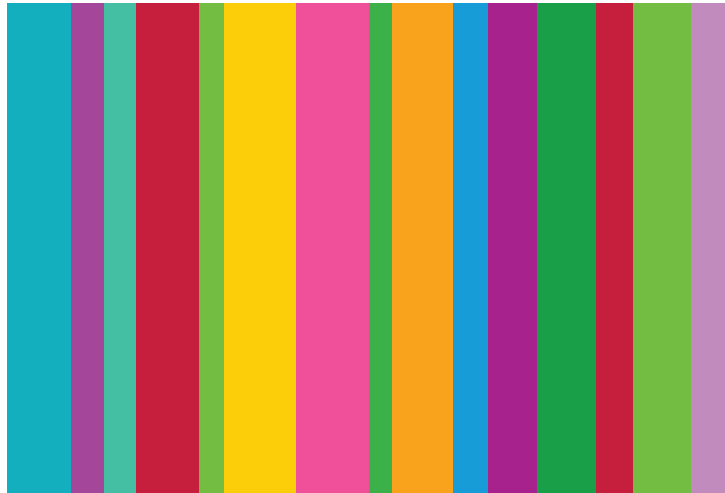




# **SWEET & JOY**



**Product Catalogue**



**1001**  
Cookies with Milk Chocolate 15% and Hazelnut 5%



**1006**  
Cookies with Lemon Cream 30%



**1002**  
Cookies with Dark Chocolate 25% and Milk Chocolate 12%



**1004**  
Cookies with Hazelnut Cream 30%



**1003**  
Cookies with White Chocolate 15% and Cranberries 5%



**1005**  
Cookies with Chocolate Cream 30%

<b>1001/1002/1003</b>	
Net Wt. (g)	135
Units per display case (pcs.)	12
Display case per pallet (pcs.)	108
Display case dimensions (mm) L x W x H	300 x 260 x 215
Displays per layer (pcs.)	12
Shelf life (months)	12

<b>1004/1005/1006</b>	
Net Wt. (g)	135
Units per display case (pcs.)	18
Display case per pallet (pcs.)	80
Display case dimensions (mm) L x W x H	365 x 235 x 240
Displays per layer (pcs.)	10
Shelf life (months)	12



**1011**  
Mint Drops & Dark Chocolate



**1013**  
Mint & Dark Chocolate



**1012**  
Composition of Milk & Dark Chocolate



**1014**  
Orange & Dark Chocolate



**1010**  
Hazelnut with Milk & Dark Chocolate



**1015**  
Pretzel Milk Chocolate

<b>1010/1011/1012</b>	
Net Wt. (g)	125
Units per display case (pcs.)	10
Display case per pallet (pcs.)	240
Display case dimensions (mm) L x W x H	280 x 200 x 110
Displays per layer (pcs.)	16
Shelf life (months)	12

<b>1013/1014/1015</b>	
Net Wt. (g)	75
Units per display case (pcs.)	20
Display case per pallet (pcs.)	240
Display case dimensions (mm) L x W x H	280 x 200 x 110
Displays per layer (pcs.)	16
Shelf life (months)	12



**1016**  
**Hazelnut with Milk & Dark Chocolate**



**1017**  
**Mint Drops & Dark Chocolate**

<b>1016/1017</b>	
Net Wt. (g)	62
Units per display case (pcs.)	20
Display case per pallet (pcs.)	240
Display case dimensions (mm) L x W x H	280 x 200 x 110
Displays per layer (pcs.)	16
Shelf life (months)	12



**1007**  
**Peanut & Delicate Cream Wafer Crisps**



**1008**  
**Coconut & Delicate Cream Wafer Crisps**



**1009**  
**Strawberry & Delicate Cream Wafer Crisps**



**Sweet Brands Sp. z o.o.**  
 ul. Runa Lesnego 7, Laki  
 05-250 Radzymin, Poland  
 t: +48 222 012 378  
 f: +48 222 012 379  
 m: +48 668 250 184  
 m: +48 518 965 601  
 m: +48 512 297 697  
 e: office@sweet-brands.com  
 w: WWW.SWEET-BRANDS.COM

<b>1007/1008/1009</b>	
Net Wt. (g)	110(1007), 100(1008/1009)
Units per display case (pcs.)	21
Display case per pallet (pcs.)	96
Display case dimensions (mm) L x W x H	195 x 395 x 245
Displays per layer (pcs.)	12
Shelf life (months)	12